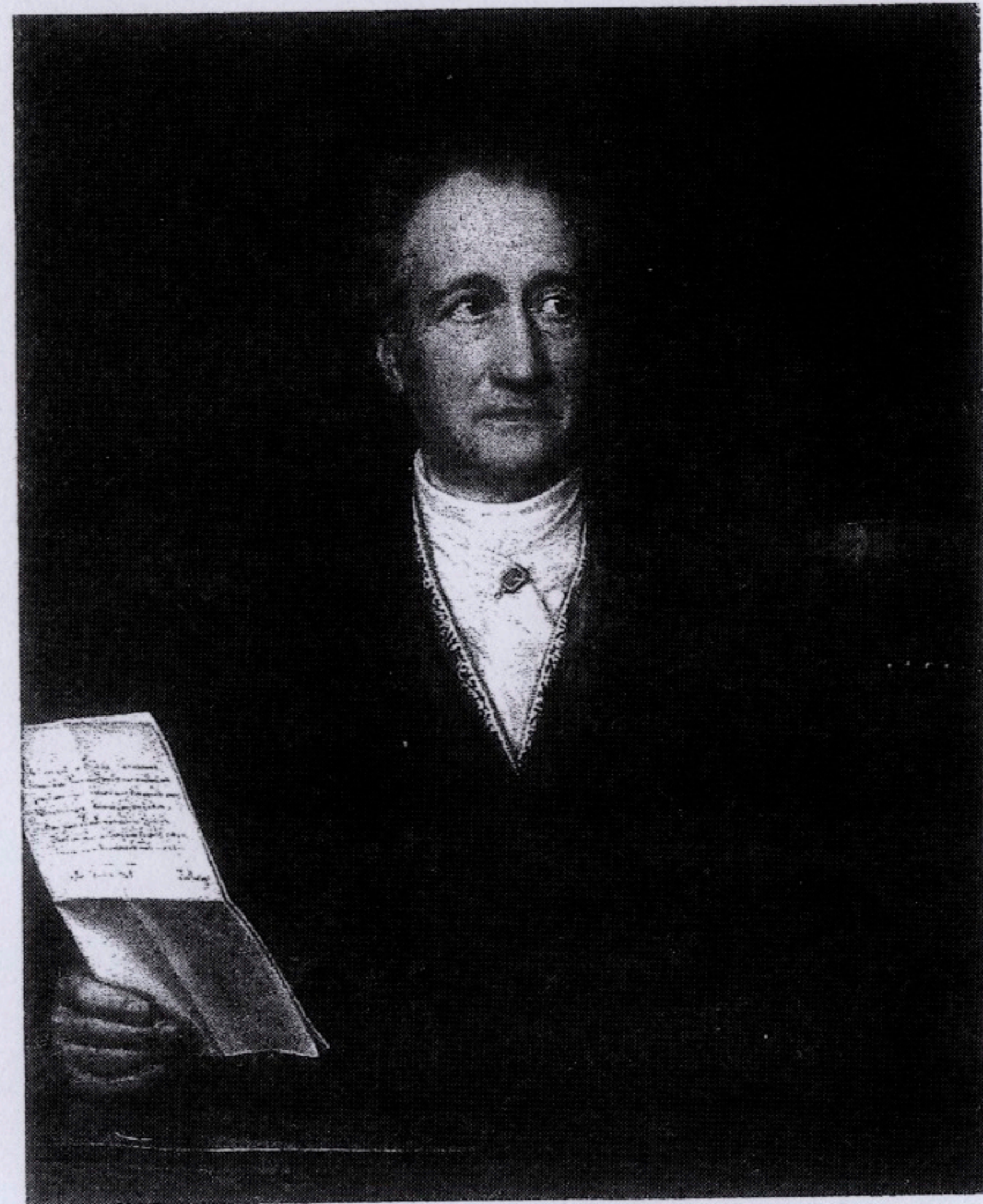


# THE SESSION



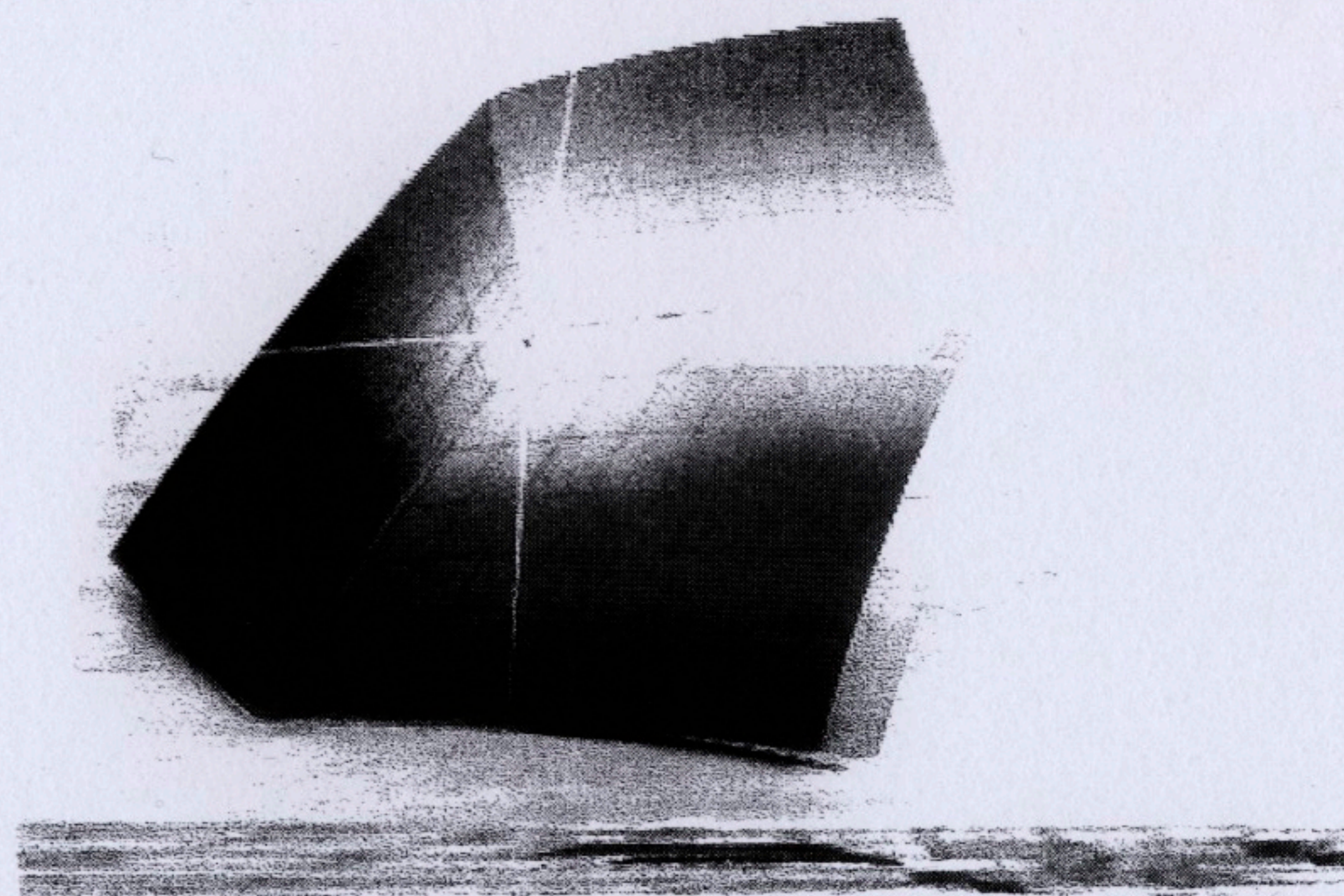
No.2, The COLO(U)R Session

what we mean when we are talking of grass green or flashy red.

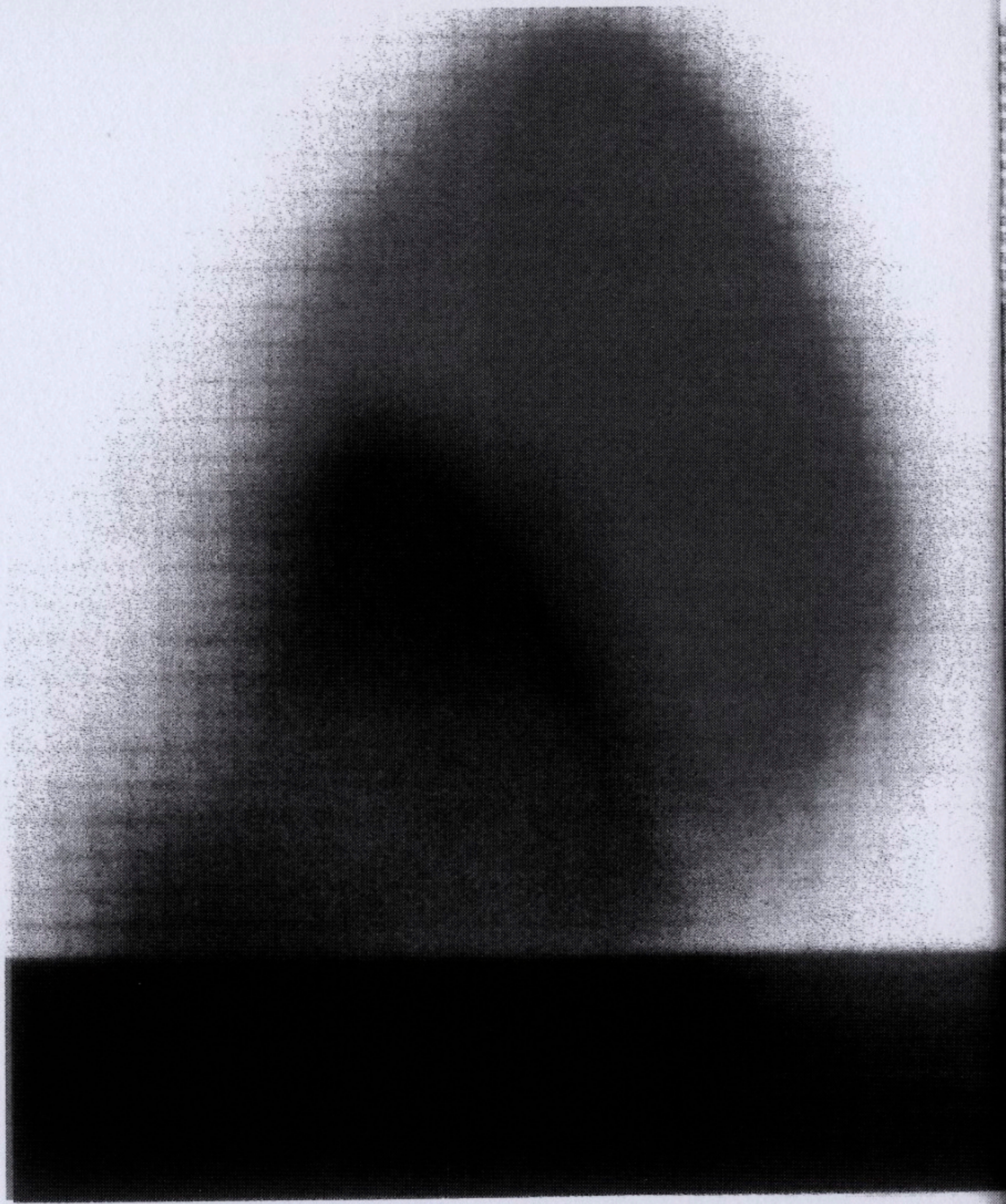
"One thing was irrefutably clear for Goethe: Of darknesses no bright can consist -- as from more and more shade no light develops. -- and this could be expressed in such a way: If one calls lila a whitish-reddish-blue, or brown a blackish-reddish-yellow, -- so one cannot call white a yellowish-reddish-greenish-blue. White is not an intermediate color of other colors. And experiments with the spectrum can neither affirm nor disprove that. In addition, it would be wrong to say 'look at the colors in nature and you will see that it is like that.' Because over the terms of the colors one is not instructed by looking."  
(Wittgenstein)

"If we were to think of a blueish orange, a reddish green, or a yellowish violet, we would have the same feeling as in the case of a south-westerly northwind." (Runge)

No.



Katja Mater -- RGB scale model



All works from the ongoing series  
'Celebrating RGB Color Space'



Katja Mater -- Self portrait with color wheel